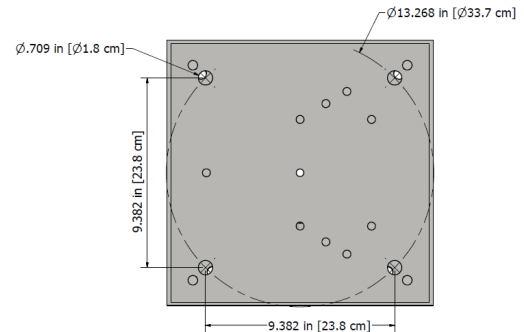
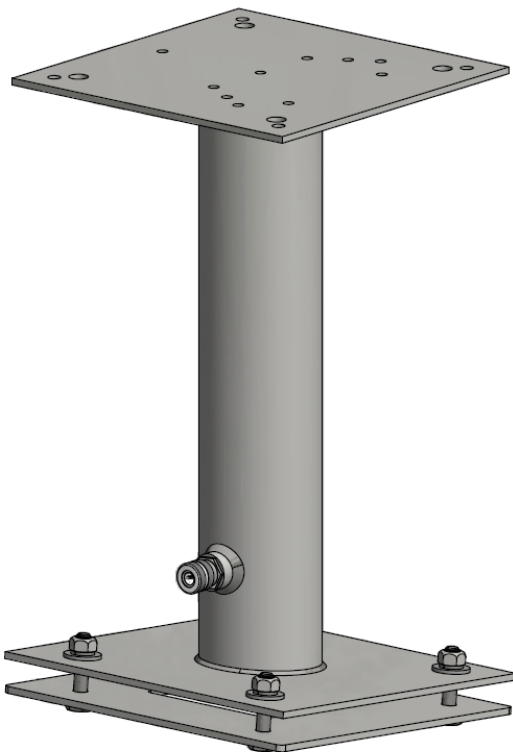


# BCN-WIND-BKT-GE2

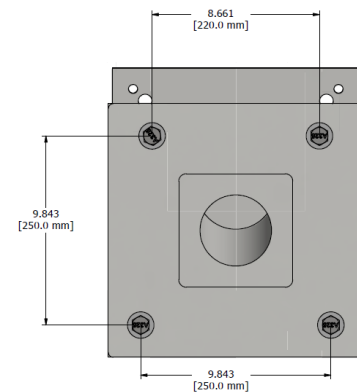
## Wind Turbine Obstruction Light Mounting Bracket

Visit our website: [www.itl-llc.com](http://www.itl-llc.com)

The **BCN-WIND-BKT-GE2** is designed to facilitate the mounting of obstruction lights on GE 2.x Series Wind Turbines. Sturdy galvanized steel construction resists corrosion. Mounting hardware and counter plate included.



TOP VIEW



BOTTOM VIEW

### Features

- Designed for GE 2.x Series Wind Turbines
- Mounting Hardware included.
- Sturdy galvanized steel construction.

### Specifications

|         |                   |
|---------|-------------------|
| Width:  | 13.19in (33.5 cm) |
| Length: | 13.54in (34.4cm)  |
| Height: | 23.11in (58.7 cm) |
| Weight: | 45lbs (21kg)      |

